

## THE PETWORTH SOCIETY

The Petworth Society was founded in 1974 "to preserve the character and amenities of the town and parish of Petworth including Byworth; to encourage interest in the history of the district and to foster a community spirit". It is non-political, non-sectarian and non-profit making.

Membership is open to anyone, irrespective of residence who is interested in furthering the object of the society.

The society aims to encourage and support other local events, organisations and trusts whose aims broadly align themselves to those of the society.

These include:

- The Leconfield Hall
- The Petworth Cottage Museum
- The Coultershaw Beam Pump
- Petworth Fair



Petworth Infants School 1885  
(on the site of the present Public Library)

## Meetings

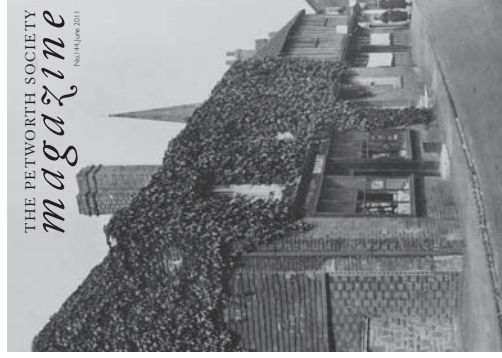
From late autumn each year the society holds regular meetings in the Leconfield Hall. Speakers and entertainers are drawn from a wide area to provide our members with both serious stimulation and light relief during the gloomy winter months.

## Petworth Fair

St. Edmund's Day  
November 20<sup>th</sup>

The highlight of the Petworth year is the transformation of the Market Square into a world of fun and laughter as the traditional pleasure fair comes to town. This unique street fair is almost as old as the town itself and retains a special place in the affection of residents both young and old. The Petworth Society has proudly organised and stewarded the fair for the past 30 years.

## The Petworth Society Magazine



It goes without saying that the quarterly magazine is the mainstay of the society. With a readership in excess of 1200 it has become recognised as one of the foremost publications of its kind. As an organ for oral recollections it probably has no parallel and

continues to produce articles of a standard unusual for a local magazine.

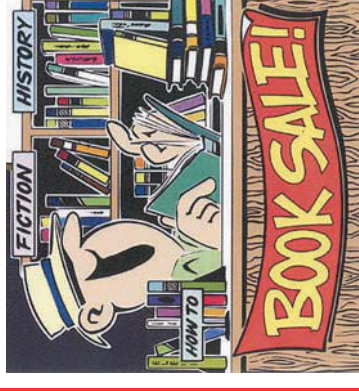
## Excursions

Recent years have seen an increase in society excursions to locations outside the immediate neighbourhood. From the ancient yew forest of Kingley Vale to the recent trips to Saddlescombe, Firlie Place and Alfriston these visits have proved ever more popular.

## The Petworth Society

### Book Sales

The successful monthly book sales held in the Leconfield Hall have not only proved to be a significant source of



revenue for the society but have also become an important shop window through which we are able to maintain a public profile in the town. Having long since passed

one hundred sales the event continues to attract book enthusiasts from all over the South East of England as is witnessed by the queue stretching around the Leconfield Hall prior to 10am on the 2<sup>nd</sup> Saturday of each month.

**Books to donate? Call Peter on 01798 342562, and yes we can collect or you can just bring them in on book sale day.**

## Walks

For those members who enjoy the open air and a leisurely stroll through the beautiful countryside which surrounds Petworth our Sunday afternoon walks have

gained a faithful following over the years. A gentle ramble through the bluebell woods at Stag Park to a hike over Brinksole Heath this is surely a must for the enthusiastic pedestrian.

